



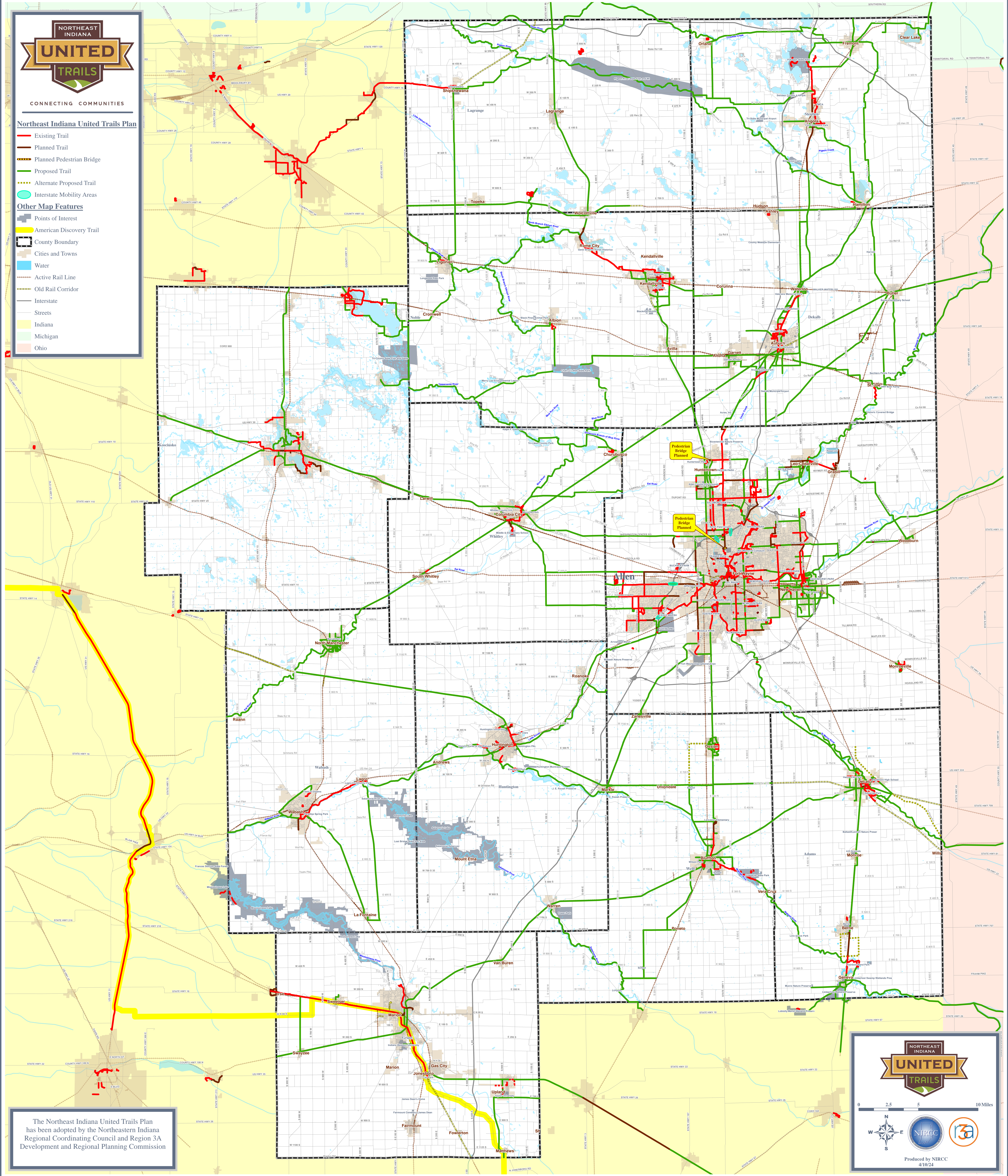
CONNECTING COMMUNITIES

Northeast Indiana United Trails Plan

- Existing Trail
- Planned Trail
- Planned Pedestrian Bridge
- Proposed Trail
- Alternate Proposed Trail
- Interstate Mobility Areas

Other Map Features

- Points of Interest
- American Discovery Trail
- County Boundary
- Cities and Towns
- Water
- Active Rail Line
- Old Rail Corridor
- Interstate
- Streets
- Indiana
- Michigan
- Ohio



The Northeast Indiana United Trails Plan has been adopted by the Northeastern Indiana Regional Coordinating Council and Region 3A Development and Regional Planning Commission