

Transportation News



Long Term and Short Term Transportation Planning

The Northeastern Indiana Regional Coordinating Council (NIRCC) recently completed the 2030 long-range transportation plan. The 2030 Transportation Plan is a 25-year, comprehensive transportation plan that addresses the future needs of the transportation system. The 2030 Transportation Plan includes highway, transit, pedestrian, and bicycle improvement projects and policies. The projects and policies will help NIRCC, the Urban Transportation Advisory Board (UTAB) and all the various jurisdictions address the future needs of the transportation system. NIRCC has adopted a long-range transportation plan every five years to offer continuity during the 25-year planning period and to allow for reassessment of priorities. In the future, NIRCC may be required by federal regulations to update the plan every three years.

After a project is included in the 2030 Transportation Plan, its next step toward completion is inclusion in the Transportation Improvement Program (TIP). The TIP is a three-year transportation plan that outlines the projects that will be started in the next three years. Due to the limited amount of local, state and federal funding available each year for transportation improvements, it is important to prioritize the projects and in some cases, space out the phases of a project over several years. The phases a project goes through include preliminary engineering, right-of-way engineering and acquisition, and construction. What year the phase of a project is undertaken is determined based on the availability of funding and the price of the phase of the project. The priority of projects is assessed each year when UTAB updates the TIP after an evaluation of each project's progress and the available funds. The following pages list projects included in the TIP for fiscal years 2006, 2007, and 2008.



TIP Status Report

The following list contains federally / locally funded projects:

2005 Status Report			
Local Road Projects	Phase	Local Road Projects	Phase
Aboite Center Rd: W. Jefferson Blvd to Coventry LN <i>Added Travel Lanes</i>	RW/CN <i>Resubmitted</i>	Maplecrest Rd: Lake Ave to SR 930 <i>New Construction</i>	RW <i>Resubmitted</i>
Ardmore Ave: Lwr Hunington Rd to Indianapolis Rd <i>New Construction</i>	CN <i>Resubmitted</i>	Moeller Rd: Green Rd to Hartzell Rd <i>Road Reconstruction</i>	PE <i>Resubmitted</i>
Auburn Rd @ Cook Rd & Clinton St <i>Intersection Improvement</i>	PE/RW <i>Resubmitted</i>	Rose Ave: Landin Rd to Green St <i>Road Reconstruction</i>	CN <i>Resubmitted</i>
Bass Rd: Hillegas Rd to Scott Rd <i>Road Reconstruction</i>	PE <i>Resubmitted</i>	St Joe Ctr Rd: St Joe Rd to Reed Rd <i>Added Travel Lanes</i>	CN <i>Resubmitted</i>
Dupont Rd: Pine Mills Rd to Auburn Rd <i>Reconstruction/Realignment</i>	CN <i>Resubmitted</i>	Spring St Bridge over NS RR <i>Bridge Reconstruction</i>	PE <i>Resubmitted</i>
Getz Rd/W Jefferson Blvd/Covington Rd <i>Reconstruction/Realignment</i>	RW <i>In Progress</i>	River Greenway: E. terminus along Maumee <i>Enhancement</i>	CN <i>In Progress</i>
Landin Rd / North River Rd <i>Intersection Improvement</i>	CN <i>Resubmitted</i>	West Jefferson Greenway Ext: Swinney Park to Rockhill Park <i>Enhancement</i>	CN <i>Completed</i>

Abbreviations

CN=Construction PE=Preliminary Engineering RW=Right-of-way

Northeastern Indiana Regional Coordinating Council

Connie R. Miles
Chairperson, DeKalb County

J. Phillip Burt
Allen County

Ted Ellis
City of Bluffton Wells County

Michael R. Fitch
Allen County

Terry McDonald
Allen County

Janet Ordway
DeKalb County

Geoff Paddock
Governor's Appointee

Graham Richard
City of Fort Wayne Allen County

Roy Buskirk
Allen County

Kevin Woodward
Wells County

Norman Yoder
City of Auburn DeKalb County

In This Issue

Local TIP Projects.....pg 2,3
 State TIP Projects.....pg 4,5
 Safety Forum.....pg 5
 Local TIP Map.....pg 6
 State TIP Map.....pg 7
 FY 05 Highlights.....pg 7

Transportation News

Summer 2005

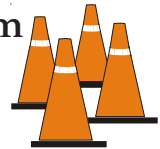


Transportation Improvement Program

The following list contains federally / locally funded projects:

Miss the 2005 Status Report?

Flip back to the front page!



For Project Locations see map on page 6

Urban Transportation Advisory Board

Dave Ross
Chairman
FW City Engineer

Michael R. Fitch
Vice Chairman
Allen County
Highway Director

Mark Becker
Fort Wayne
Representative

Linda Bloom
Allen County
Commissioner

Dave Gionet
Fort Wayne Public
Transportation Corp.
(Citilink)

Susan Hoot
Allen County
Planning Commission
Representative

Paula Hughes
Allen County Council

Mayor Terry McDonald
New Haven
Representative

Tory Richardson
Fort Wayne/Allen County
Airport Authority

Bob Kennedy
Board of Public Works

Judi Wire
Fort Wayne Planning
Commission

John Leckie
INDOT

Joyce Newland
Federal Highway
Administration
(Non-voting members)

Dave Holtz
Jerry Halperin
INDOT (Non-voting
member)

2006 Projects			
Local Road Projects	Phase	Local Road Projects	Phase
Aboite Center Rd: W. Jefferson Blvd to Coventry Ln <i>Added Travel Lanes</i>	RW	Moeller Rd: Green St to Hartzell Rd <i>Road Reconstruction</i>	PE
Ardmore Ave: Lwr Hungtinton Rd to Airport Exp <i>New Construction</i>	CN	Rose Ave: Landin Rd to Green St <i>Road Reconstruction</i>	CN
Arubum Rd @ Cook Rd & Clinton St <i>Intersection Improvement</i>	PE/RW	St Joe Ctr Rd: St Joe Rd to Reed Rd <i>Added Travel Lanes</i>	CN
Bass Rd: Hillegas Rd to Scott Rd <i>Road Reconstruction</i>	PE	St Joe Ctr Rd: Reed Rd to Maplecrest Rd <i>Road Reconstruction/Realignment</i>	PE
Carroll Rd: Corbin Rd to .5 mi W/o Corbin Rd <i>Road Reconstruction/Realignment</i>	PE	State Blvd: Spy Run Ave to Clinton St <i>Added Travel Lanes</i>	PE
Dupont Rd: Pine Mills Rd to Auburn Rd <i>Road Reconstruction/Realignment</i>	CN	Spring St Bridge over NS Railroad <i>Bridge Reconstruction</i>	PE
Getz Rd/W. Jefferson Blvd/Covington Rd <i>Intersection Improvements</i>	CN	Citilink Capitalization of Maintenance Costs Complementary Paratransit Costs Minibuses (body on chassis) Other Maintenance Equipment AVL Communications Capital and Subscription Costs Northside Satellite Terminal	
Landin Rd/North River Rd <i>Intersection Improvement</i>	CN		
Gump Rd: SR 3 to Coldwater Rd <i>Road Reconstruction</i>	PE		
Maplecrest Rd: Lake Ave to SR 930 <i>New Construction</i>	RW		

2007 Projects			
Local Road Projects	Phase	Local Road Projects	Phase
Aboite Center Rd: W. Jefferson Blvd to Coventry Ln <i>Added Travel Lanes</i>	CN	State Blvd: Spy Run Ave to Clinton St <i>Added Travel Lanes</i>	PE
Arubum Rd @ Cook Rd & Clinton St <i>Intersection Improvement</i>	CN	Spring St Bridge over NS Railroad <i>Bridge Reconstruction</i>	RW
Carroll Rd: Corbin Rd to .5 mi W/o Corbin Rd <i>Road Reconstruction/Realignment</i>	RW	Citilink Capitalization of Maintenance Costs Complementary Paratransit Costs Other Maintenance Equipment AVL Communications Capital and Subscription Costs Bus Shelters, Street Furniture, and Signage Six Buses Hybrid (low floor) 35' Four Buses Hybrid (low floor) 40'	
Flutter Rd: Schwartz Rd to Maplecrest Rd <i>Road Reconstruction/Realignment</i>	PE		
Maysville Rd/Stellhorn Rd: Maplecrest Rd to Koaster Ditch <i>Added Travel Lanes</i>	PE		
Moeller Rd: Green St to Hartzell Rd <i>Road Reconstruction</i>	RW		
St Joe Center Rd: Reed Rd to Maplecrest Rd <i>Road Reconstruction</i>	RW		

2008 Projects		
Local Road Projects	Phase	Citilink
Bass Rd: Hillegas Rd to Scott Rd <i>Road Reconstruction</i>	RW	Capitalization of Maintenance Costs Complementary Paratransit Costs
Maplecrest Rd: Lake Ave to State Blvd <i>Road Reconstruction</i>	PE	Five Minibuses (body on chassis) AVL Communications Capital and Subscription Costs Other Maintenance Equipment



Abbreviations

CN=Construction PE=Preliminary Engineering RW=Right-of-way

Transportation Improvement Program

The following list contains locally funded projects:



For Project Locations see map on page 6



2006-2008 Projects			
Local Road Projects	Phase	Local Road Projects	Phase
Ardmore Ave @ Taylor St <i>Intersection Improvements</i>	CN	Lake Ave from Coliseum Blvd to Reed Rd <i>Road Reconstruction</i>	CN
Ardmore Ave from Jefferson Blvd to Taylor St <i>Road Reconstruction</i>	CN	Lake Ave from Hobson Rd to Coliseum Blvd <i>Road Reconstruction</i>	CN
Clinton St/Leo Rd/Mayhew Rd <i>Intersection Improvements</i>	CN	North Glendale Ave from Jefferson Blvd to North Bend Dr <i>New Construction</i>	CN
Coldwater Rd from Union Chapel Rd to N/o Gump Rd <i>Road Reconstruction</i>	CN	Union Chapel Rd from Interstate 69 to Tonkel Rd <i>Road Reconstruction</i>	CN
Lahmeyer @ St Joe Ctr Rd <i>Intersection Improvements</i>	CN	Union Chapel Rd @ Leo Rd/SR 1 <i>Intersection Improvements</i>	CN



Abbreviations

CN=Construction PE=Preliminary Engineering RW=Right-of-way

Transportation Improvement Program Human Service Agencies FY 2006

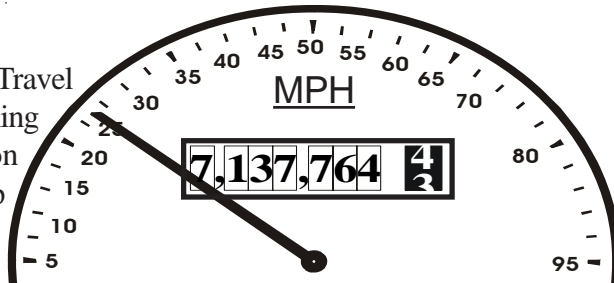
The following list contains federally / locally funded modified passenger vans:

2004 Funding Cycle	
Human Service Agency	Description
Allen County Council on Aging	Modified Passenger Van with Lift
Community Transportation Network	Modified Passenger Van with Lift (replacement)

2005 Funding Cycle	
Human Service Agency	Description
Allen County Council on Aging	Modified Passenger Van with Lift (replacement)
Community Transportation Network	Modified Passenger Van with Lift (replacement)
Byron Health Services	Modified Passenger Van with Lift (replacement)
Tumstone Center	Modified Passenger Van with Lift (replacement)

Did You Know.....

In 2004 the daily Vehicle Miles of Travel (VMT) for the Metropolitan Planning Area (MPA) was over 7.1 million miles traveled. That number is up about 105 thousand from 2003.



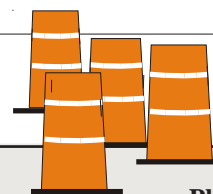


Transportation Improvement Program

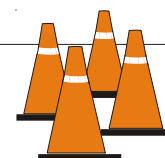
The following list contains federally / state funded projects:

For Project Locations see map on page 7

2006 Projects			
State Projects	Phase	State Projects	Phase
SR 1: @Grabill/Hosler Rd <i>Intersection Improvements</i>	PE	US 33: from US 30 to Cook Rd (includes signs & signals) <i>Added Travel Lanes</i>	CN
SR 1: @ Amstutz Rd (NB left-turn lane) <i>Intersection Improvements</i>	PE	SR 37: over Bottem Ditch & Grice Ditch, N/o I-469 <i>Small Structure Replacement</i>	RW
SR 1: from I-69 to 0.21 mi E/o Tonkel Rd <i>Added Travel Lanes (includes signals & signs)</i>	PE	I-69: bridge over Yohne Rd <i>Bridge Rehabilitation</i>	PE
SR 3: from Ludwig Rd to Dupont Rd (includes signals) <i>Added Travel Lanes (includes signals)</i>	RW	I-69: from 0.83 mi N/o SR 1 to 9.51 mi N/o SR 1 <i>Pavement Rehabilitation (Includes 7 bridges)</i>	PE
SR 14: @ Allen County / Whitley County Line Rd <i>Intersection Improvements</i>	PE	SR 101: bridge over Maumee River <i>Bridge Rehabilitation</i>	PE
SR 14: Scott Rd to Hadley Rd <i>Added Travel Lanes (includes signals & signs)</i>	RW	SR 930: @ Washington Blvd and Coliseum Blvd <i>Interchange Modification</i>	PE
US 24: from .5 mi E/o I-469 to .5 mi E/o Ryan / Bruick Rd <i>New Road Construction (includes interchange)</i>	PE	Coldwater Rd: N and S of I-69 Interchange <i>Pavement Patch and Rehabilitation</i>	CN
US 24: from .5 mi E/o Ryan / Bruick Rd to .5 mi E/o Webster Rd <i>New Road Construction (includes interchange)</i>	PE	North River Rd: At-Grade Railroad Crossing (ID#478208L) <i>Railroad Protection Upgrade</i>	CN
US 24: from .5 mi W/o SR 101 to Indiana / Ohio State Line <i>New Road Construction (includes interchange)</i>	PE	Noyer Rd: At-Grade Railroad Crossing (ID#478039B) <i>Railroad Protection Upgrade</i>	CN
US 27: on NB Spy Run Ave from St Mary's River to Riverside Ave <i>Road Rehabilitation</i>	PE	Airport Exp: At-Grade Railroad Crossing (ID#478051H) <i>Railroad Protection Upgrade</i>	CN
US 30: @ US 33 <i>Interchange Modification</i>	PE	McArthur Dr: At-Grade Railroad Crossing (ID#478052P) <i>Railroad Protection Upgrade</i>	CN
US 30: from Flaugh Rd to US 33 <i>Added Travel Lanes</i>	PE	South County Line Rd: At-Grade Railroad Crossing (ID#478109N) <i>Railroad Protection Upgrade</i>	CN
US 30: from US 33 to I-69 <i>Added Travel Lanes</i>	PE	Winters Rd: At-Grade Railroad Crossing (ID#478114K) <i>Railroad Protection Upgrade</i>	CN
US 33: over S branch of Benward Ditch, 2.85 mi N/o US 30 <i>Small Structure Replacement</i>	RW		



2007 Projects			
State Projects	Phase	State Projects	Phase
SR 1: @Grabill/Hosler Rd <i>Intersection Improvements</i>	RW	US 27: on NB Spy Run Ave from St Mary's River to Riverside Ave <i>Road Reconstruction</i>	RW
SR 1: from I-69 to 0.21 mi E/o Tonkel Rd <i>Added Travel Lanes (includes signals & signs)</i>	RW	US 27: bridge over St Mary's River <i>Bridge Replacement</i>	PE
SR 14: @ Allen County / Whitley County Line Rd <i>Intersection Improvements</i>	RW	US 27: realign SB US 27 from Spy Run Creek to E 4th St <i>Road Reconstruction</i>	PE
US 24: from .5 mi E/o Webster Rd to .5 mi W/o SR 101 <i>New Road Construction</i>	PE	US 30: @ US 33 <i>Interchange Modification</i>	RW
US 24: from .5 mi E/o Ryan / Bruick Rd to .5 mi E/o Webster Rd <i>New Road Construction (includes interchange)</i>	RW	SR 37: over Bottem Ditch & Grice Ditch, N/o I-469 <i>Small Structure Replacement</i>	CN
US 24: from .5 mi E/o I-469 to .5 mi E/o Ryan / Bruick Rd <i>New Road Construction (includes interchange)</i>	RW	I-69: Meyer Ditch @ Allen / Dekalb County Line <i>Small Structure Replacement</i>	PE
US 24: from .5 mi W/o SR 101 to Indiana / Ohio State Line <i>New Road Construction (includes interchange)</i>	RW	SR 101: bridge over Brown Ditch <i>Bridge Replacement</i>	PE



(FOR 2008 STATE PROJECTS SEE PG. 5)

Abbreviations

CN=Construction PE=Preliminary Engineering RW=Right-of-way

Transportation Improvement Program

The following list contains federally / state funded projects:

For Project Locations see map on page 7

2008 Projects			
State Projects	Phase	State Projects	Phase
SR 1: @ Amstutz Rd (NB left-turn lane) <i>Intersection Improvements</i>	RW	US 30: from Flaugh Rd to US 33 <i>Added Travel Lanes</i>	RW
SR 1: from I-69 to 0.21 mi E/o Tonkel Rd <i>Added Travel Lanes (includes signals & signs)</i>	CN	US 30: from US 33 to I-69 <i>Added Travel Lanes</i>	RW
SR 3: Willow Creek Access Rd over Willow Creek 6.17 mi N/o I-69 <i>Small Structure Replacement</i>	PE	SR 37: @ Antwerp Rd / Water St <i>Intersection Improvement</i>	CN
SR 3: bridge over Willow Creek 6.17 mi N/o I-69 <i>Small Structure Replacement</i>	PE	I-69: bridge over Dennis Ditch 1.7 mi N/o Lafayette Ctr Rd <i>Small Structure Replacement</i>	PE
SR 3: Huntertown Drain-Equalizer 7.07 mi N/o I-69 <i>Small Structure Replacement</i>	PE	I-69: from .83 mi N/o SR 1 to 9.51 mi N/o SR 1 <i>Road Rehabilitation (includes 7 bridges)</i>	PE
US 27: over Valentine Ditch 3.2 mi N/o Adams/Allen Co Line <i>Small Structure Replacement</i>	PE	I-69: from 0.48 mi S/o Coldwater Rd to 0.86 mi N/o SR 1/Dupont Rd (includes 2 bridges, signs and lights) <i>Added Travel Lanes</i>	CN
US 27: bridge over St Mary's River <i>Bridge Replacement</i>	RW	SR 101: bridge over Brown Ditch 3.59 mi S/o US 30 <i>Bridge Replacement</i>	RW
US 27: bridge over Spy Run Creek <i>Small Structure Replacement</i>	PE	SR 101: bridge over Maumee River <i>Bridge Rehabilitation</i>	CN
US 30: bridge over Spy Run Creek 6.7 mi E/o Whitley/Allen Co Line <i>Small Structure Replacement</i>	PE	I-469: from 0.7 mi W/o SR 1 to 0.5 mi E/o US 27 (includes 10 bridges) <i>Pavement Replacement</i>	PE
US 30: bridge over Solon Ditch 0.27 mi E/o Whitley/Allen Co Line <i>Small Structure Replacement</i>	PE	I-469: from 0.5 mi E/o US 27 to 0.32 mi S/o Tillman Rd (includes 3 bridges) <i>Pavement Replacement</i>	PE
US 30: bridge#3 over Seeger Ditch 5.25 mi E/o Whitley/Allen Co Line <i>Small Structure Replacement</i>	PE	SR 930: @ Washington Blvd and Coliseum Blvd <i>Interchange Modification</i>	RW



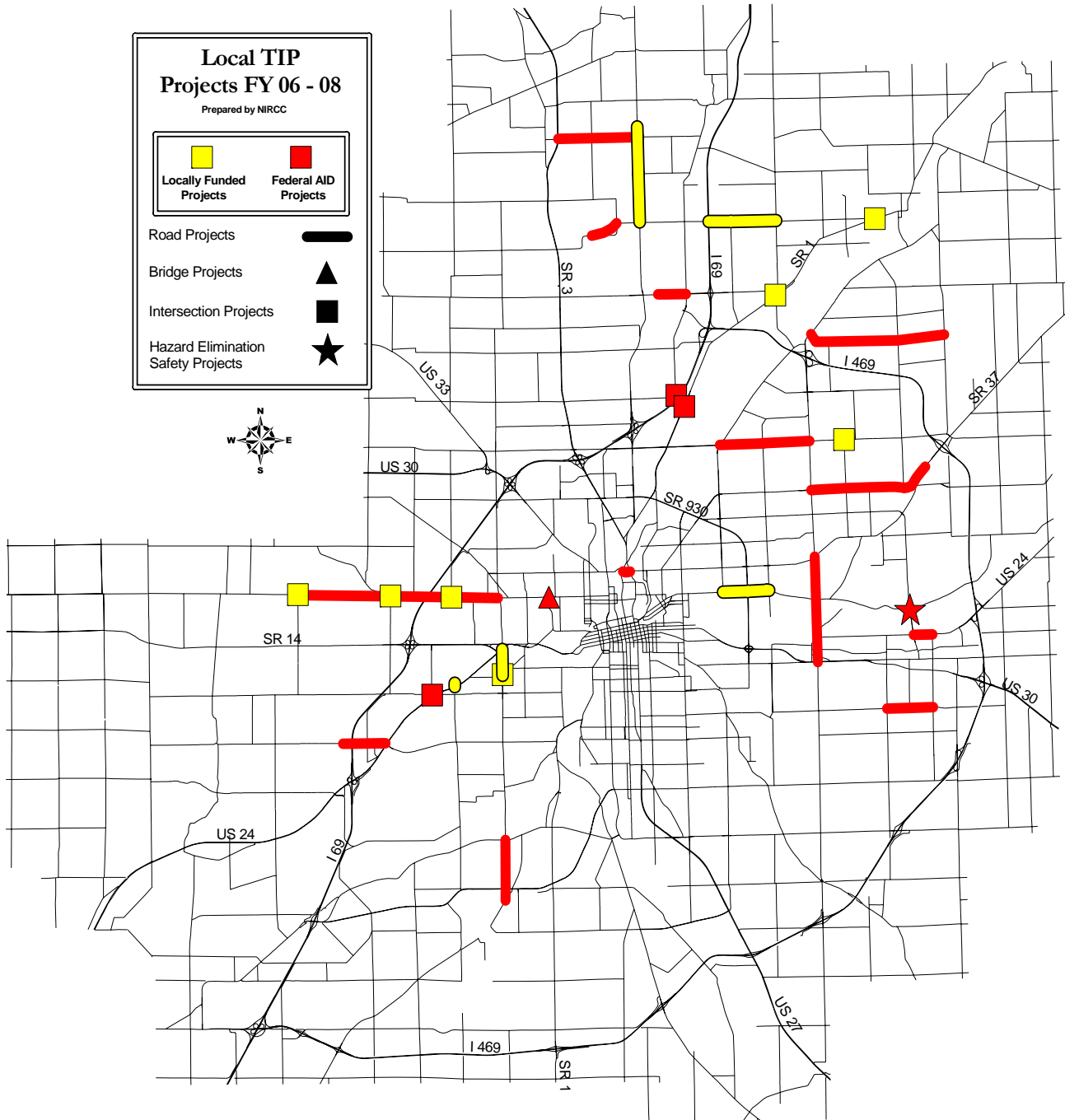
Safety Forum 2004

Staff held the first annual Safety Forum on February 1, 2005 to discuss transportation safety in Allen County. Staff invited local engineers from all municipalities within Allen County and representatives from each law enforcement agency. The goals of the forum were to discuss possible causes for crashes at locations identified and to seek solutions to mitigate future high crash frequencies. Staff presented data for the high crash locations that were identified from the data collected over the past three years. The open format of the forum allowed police officers and engineers to discuss openly ideas and observations from their professional and personal experiences with one another and with staff regarding the crash locations and related transportation safety concerns. An additional component of the forum was to establish a line of communication between local engineers and police officers through NIRCC to better identify problems and solutions regarding transportation safety.

The second forum is being scheduled for the fall of 2005 that will include the data from 2004.

Check out our website!!

To check out our website just go to the Allen County Website at www.co.allen.in.us and use the menus "Services and Elected Officials" and then "NIRCC". Our website will be updated in September 2005 and will include the 2030 Long Range Transportation Plan, Transportation Improvement Program, Bicycle and Pedestrian Plan, traffic counts and much more.



* Projects located outside the metropolitan planning area are not displayed on this map.

Question?

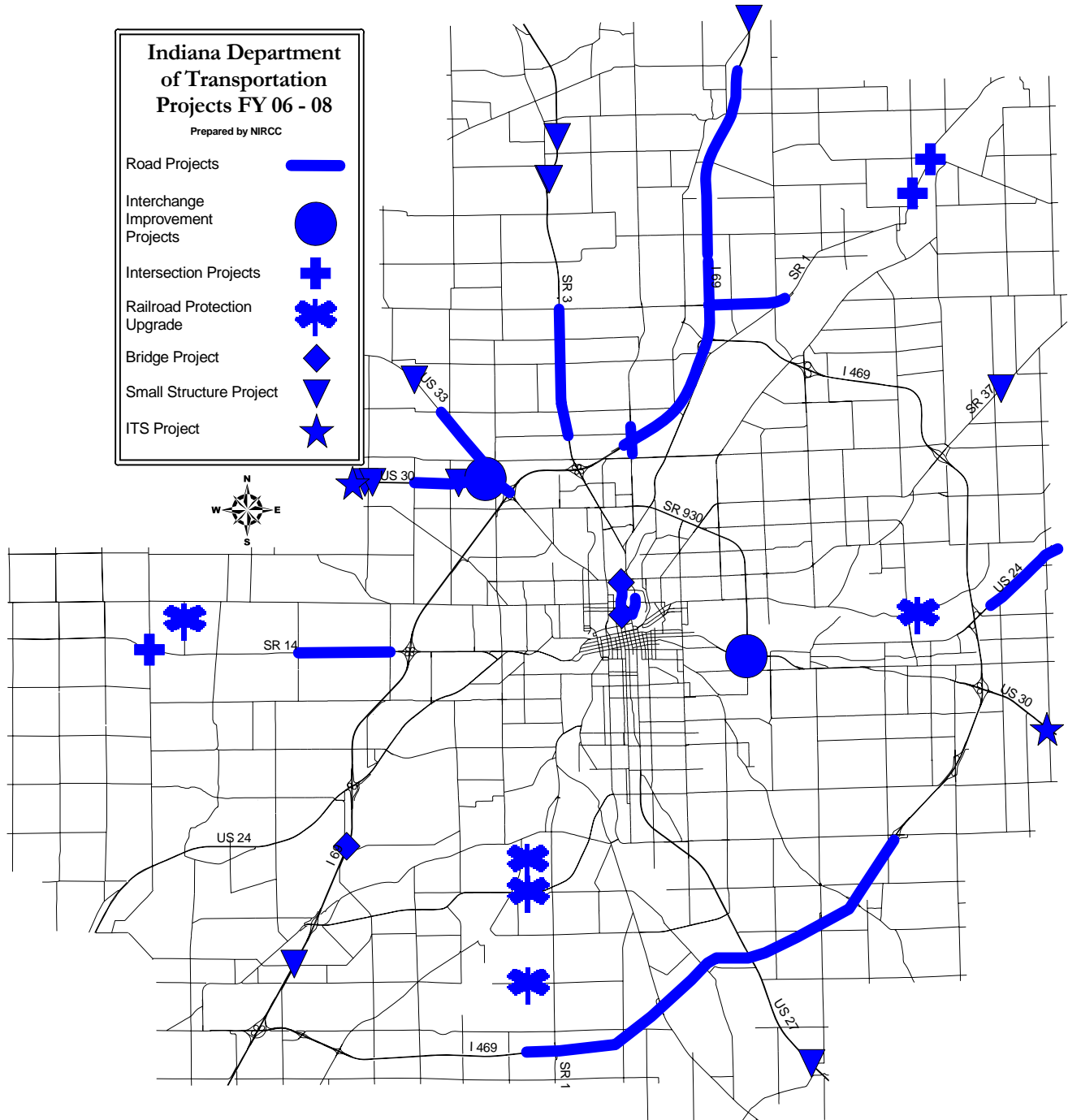


On Average, how long does it take to drive from Gump Rd (at Huntertown) to the Glenbrook Mall entrance south of Coliseum Blvd between 7-8 AM? What about from Dupont Rd to the Glenbrook Mall entrance between 7-8 AM?

- A. 13.4 min, 9.6 min B. 9.7 min, 5.2 min C. 18.9 min, 15.3 min D. 15.8 min, 13.2 min

On Average, how long does it take to drive from the Glenbrook Mall entrance south of Coliseum Blvd to Dupont Rd between 4-5 PM? What about from the Glenbrook Mall entrance to Gump Rd between 4-5 PM?

- A. 13.4 min, 16.8 min B. 15.7 min, 18 min C. 12.3 min, 15.2 min D. 9.1 min, 12.8 min



* Projects located outside the metropolitan planning area are not displayed on this map.

Fiscal Year 2005 Highlights

The Northeastern Indiana Regional Coordinating Council has recently finished up another fiscal year. There are several types of studies that go on behind the scenes of area transportation planning. NIRCC does a significant amount of traffic monitoring throughout the region.

Our annual traffic count programs is one of our most intensive traffic monitoring system. Traffic count locations are recounted at least every three years within Allen County. Several Travel Time and Delay studies were done throughout the last fiscal year. These studies measure the average speeds and the amount of time it takes to travel a selected corridor. They are used to monitor roadway improvements, measure levels of service,

(Continued on Pg. 8)

NIRCC

630 City-County Building
One East Main Street
Fort Wayne, Indiana 46802-1804

Telephone: (260) 449-7309
Fax: (260) 449-7682

Fiscal Year 2005 Highlights continued...

identify areas of congestion, and help calibrate our transportation model. NIRCC also monitors and analyzes intersection characteristics. These intersection studies are used for signal warrants and level of service measurements. A corridor study is another tool for monitoring traffic that NIRCC has used over the last fiscal year. The main purpose of a corridor study is to evaluate traffic impacts of future developments on an existing corridor. The corridor analysis estimates the number of new trips from anticipated developments that will be added to an existing facility to examine the changes of service level.

Traffic Counting

NIRCC has finished another traffic counting year with traffic count locations in Adams, Allen, and Wells County. Adams and Wells County have both been a part of the state traffic counting program this past summer. The NIRCC staff completed 100 traffic counts in Adams County and 86 traffic counts in Wells County. In the rural parts of Allen County NIRCC completed 255 traffic counts. Within the more urbanized Metropolitan Planning Area NIRCC completed 486 traffic counts.

Travel Time and Delay

NIRCC has finished five Travel Time and Delay Studies. The following corridors were completed: Ardmore Ave/Hillegas Rd/Huguenard Rd, State Blvd, Adams Cntr Rd/Marion Cntr Rd, Wallen Rd, and US 27.

Intersection and Arterial Analysis

NIRCC completed 25 Intersection Analysis studies this past year. These studies were done by request or were part of a Corridor Study.

Corridor Study

NIRCC completed two Corridor Studies this past year. West County Line Rd was studied from US 30 to US 24. The Maysville Rd/Landin Rd Study was done from Meijer Dr to Rose Ave.

